

EGEE Asia Pacific Regional Operation Center

Min-Hong Tsai

ASGC

ISGC 2007

March 29, Taipei

<http://www.eu-egee.org/>

<http://www.twgrid.org/aproc/>

- **APROC Introduction**
- **Status**
- **Joining EGEE**

- **APROC Mission**
 - Provide deployment support facilitating Grid **expansion**
 - Maximize the **availability** of Grid services
- **Supports EGEE sites in Asia Pacific since April 2005**
 - 20 production sites, 8 countries
 - 9 sites joined EGEE since last ISGC: recently HKU, KISTI
 - 3 sites in certification process
 - Philippines: Advanced Science and Technology Institute
 - Korea: KONKUK
 - Mongolia: (MAS IPT) Mongolian Academy of Sciences

- **Site Deployment Support**

- Registration
- Installation
- Certification

- **Operations Support**

- Monitoring, troubleshooting
- Problem tracking
- Software updates and security coordination
- Regional VO services - VOMS and LFC

- **ASGCCA CA Service**

- provide certificates for AP EGEE/LCG sites without domestic CA.

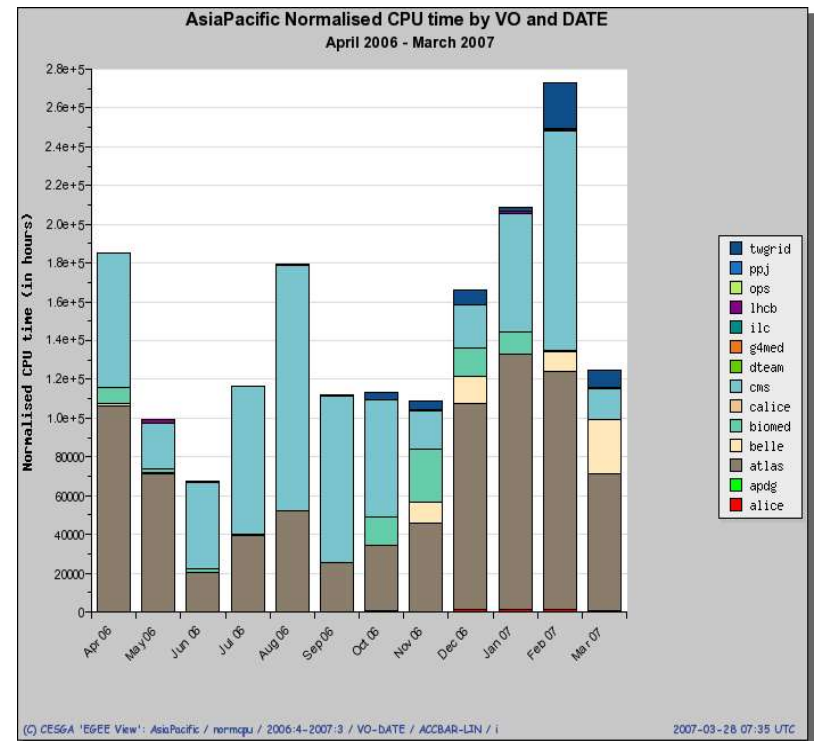
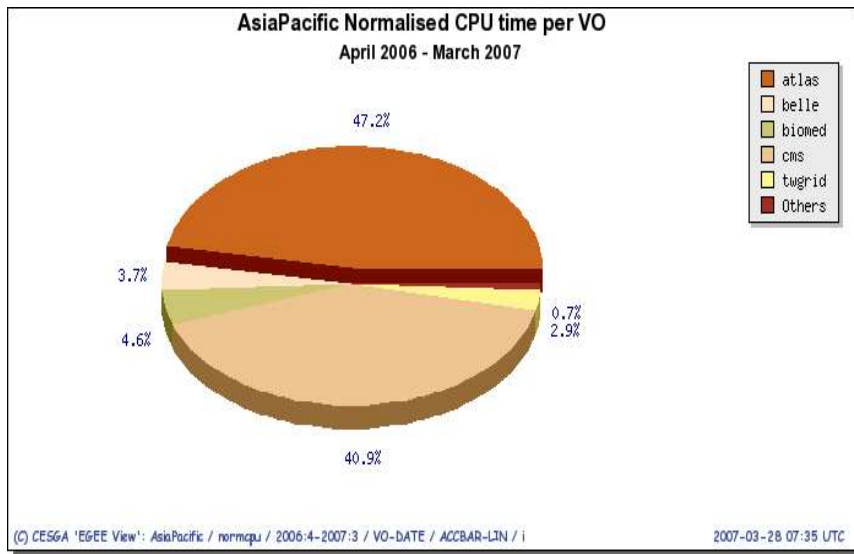
- **EGEE Operations**

- CIC-on-duty:
- Monitoring tool development:
- TPM:
- OSCT:

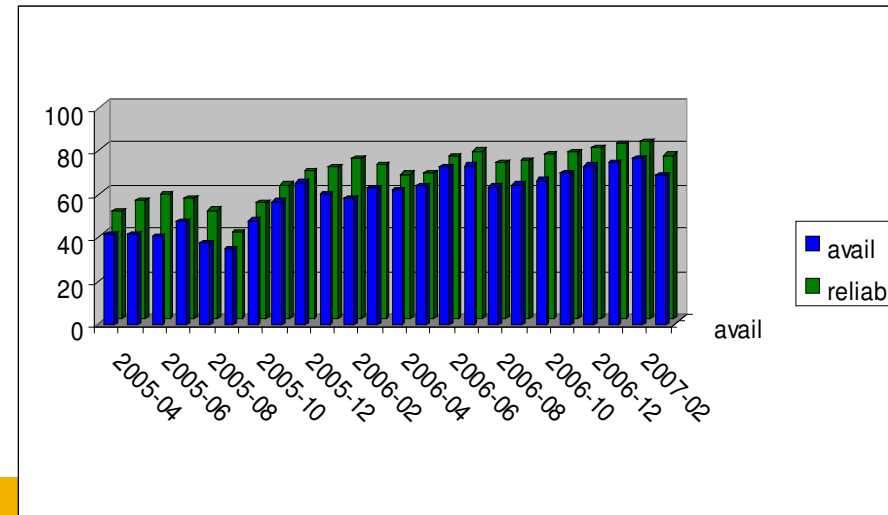
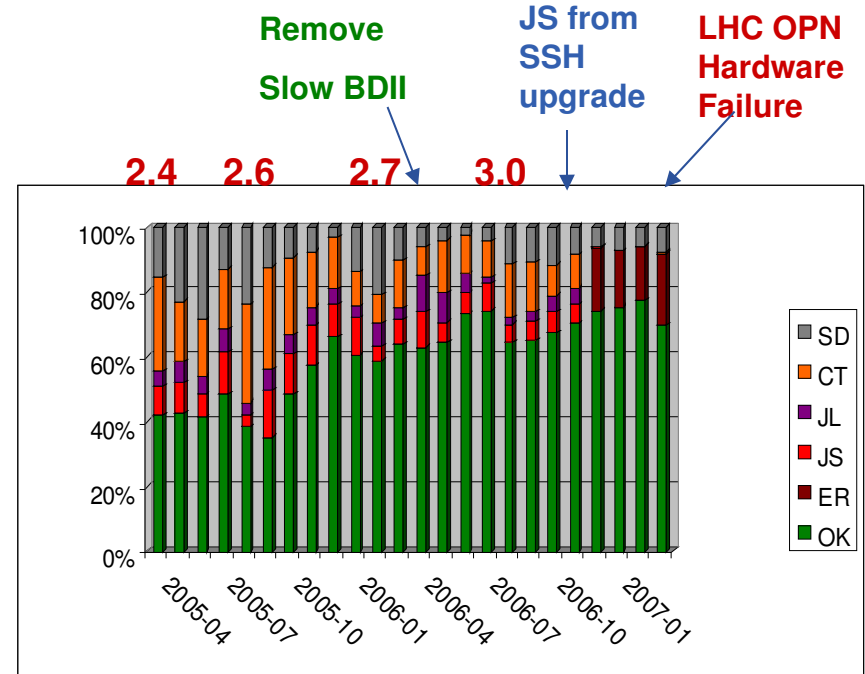


EGEE global operations
 GStat and GGUS Search
 Front line user support (Q4 2006)
 Incident Response duty (Dec 2006)

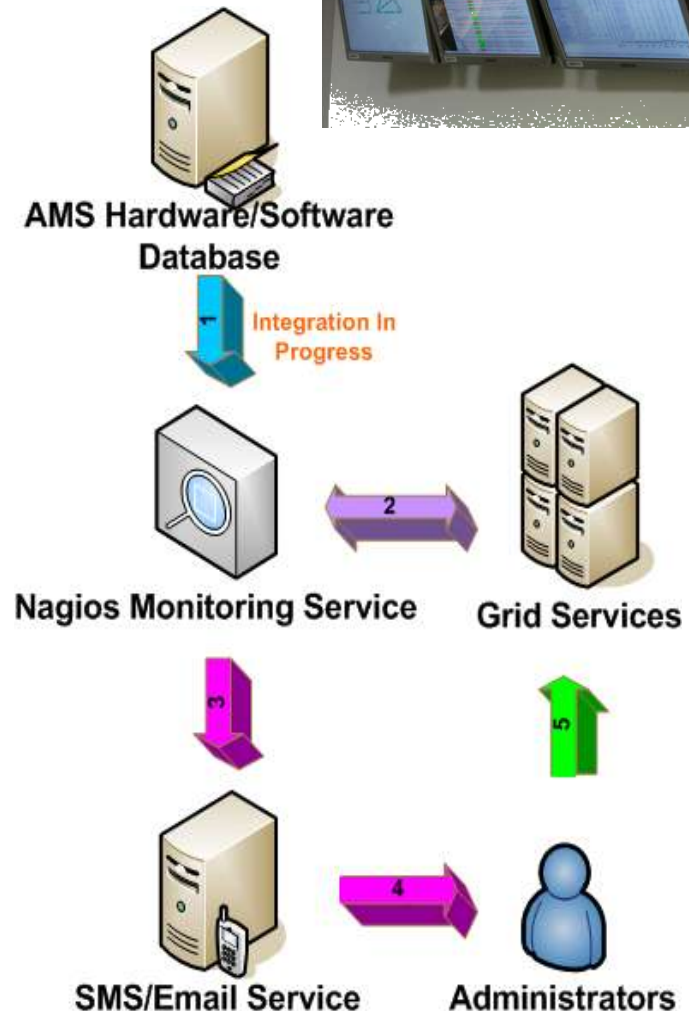
- **New Active VOs:** Belle and TWGrid
- **This year:** 200 KSI2K Years
- **Last year:** 41 KSI2K Years



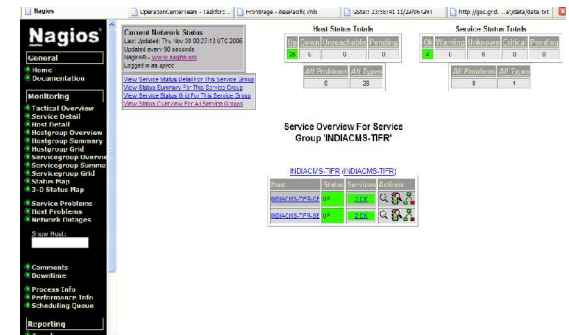
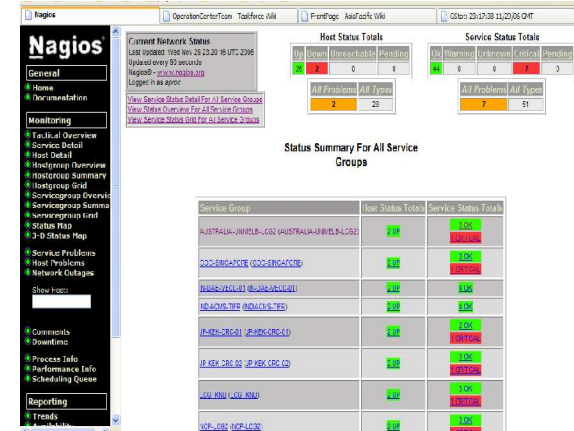
- **Daily snapshots of SAM results of region**
 - Availability increased to **70-80%** range from 60-70% a half year ago
- **CT mostly replica management failure**
 - Sensitive to Information System access/performance
 - Request that data management clients can **failover** to secondary BDII
- **Network Issues**
 - Often the root cause of CT, JL and JS
 - Network congested site set up local top-level BDII
 - Increase default update timeout and breath time



- **Planned integration of Asset DB**
- **Nagios plugins developed**
 - CE
 - LFC
 - VOMS
 - Storage
 - IT services
 - OS
- **Notification via Email**
 - SMS transmission device currently being tested



- Tests run at faster frequency
 - 5-10 minutes
 - **Faster** response to faults
- Add customized plugins
 - Run **low level** tests for faster isolation of problems
 - Tests may **not be available** in global monitoring tools yet
 - Ability to run tests **on the target host** via NRPE
- Management Interface
 - Acknowledgement
 - On demand execution of tests
 - Historical availability
 - Test dependencies

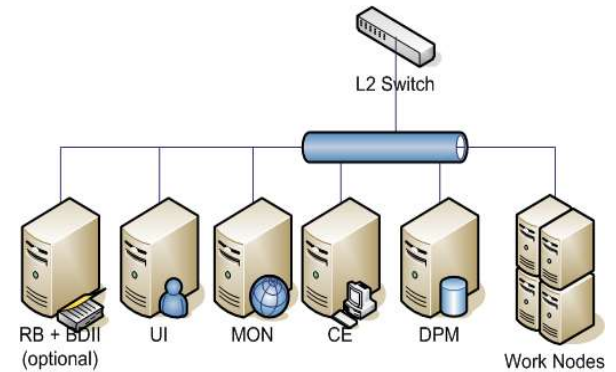


http://lists.grid.sinica.edu.tw/apwiki/Nagios_monitoring_-_APROC_sites

http://lists.grid.sinica.edu.tw/apwiki/Nagios_Plugins_Description

- **Increase monitoring coverage**
 - Information System
 - Network performance monitoring
 - available/achievable bandwidth
 - Full mesh monitoring
- **Improve troubleshooting tools**
 - http://lists.grid.sinica.edu.tw/apwiki/APROC/Troubleshooting_Guides
 - FAQ system
 - Service diagnostic scripts
- **Integration of ticketing system with GGUS**
- **Training**
 - EGEE Induction at GridAsia 2007. June 5, 2007 Singapore.

- **Contact APROC**
- **If domestic CA is not available**
 - Register as a ASGCCA RA **during ISGC**
- **Dedicated an administrator with Unix experience**
- **Allocate servers**
 - 5: UI, CE, WN, DPM, MON
 - 3: CE/WN, MON, DPM
 - UI can be installed in user account
 - Consider Virtual Machine for MON
- **Study user guide and installation manual**
- **Send configuration file to APROC for review before deployment**
- **Complete registration and certification process**



- **Establish domestic CA if none exists**
- **Increase availability and resource levels**
- **Establish domestic operations structure**
 - Operations procedures
 - Tools: monitoring and notification, ticketing system
 - User and administrator support
- **Training for administrators and users**
- **Collaborate with APROC in Regional operations**
- **Q: Need for regional experimental Grid?**

- **No regional projects to promote collaboration in EGEE**
- **Network bandwidth**
 - Low capacity: regional and last mile
 - Usage based billing
- **Need for training**
 - Training for trainers
 - Application Training
 - E-Learning material
- **However EGEE already provides**
 - M/W development and integration
 - Operations structure, coordination and support
 - Close to 200 user communities

- **APROC Provides EGEE operations support services to AsiaPacific**
- **EGEE sites in region has grown to 20 sites with utilization of 200 ksi2k years**
- **We have also improved availability but still is significant room for improvement**
- **We look forward to more site joining EGEE in the region and eht possibility for further collaboration**
 - Applications
 - Operations
- **Feedback** on what we can improve

- **Questions?**

- roc@lists.grid.sinica.edu.tw
- <http://www.twgrid.org/aproc/>

- **Thanks to efforts from:**

- **T1/APROC Team**

- | | |
|---------------|---------------|
| ▪ Jason Shih | Dave Wei |
| ▪ Felix Lee | Joanna Huang |
| ▪ Aries Hong | Hung-Che Jen |
| ▪ Jinny Chien | Shu-Ting Liao |
| ▪ Yi-Ping Wu | Min Tsai |